

A New Genus of Biting Midge from California Related to *Neurohelea* Kieffer

(Diptera, Ceratopogonidae)

WILLIS W. WIRTH AND NIPHAN CHANTHAWANICH RATANAWORABHAN¹

*Systematic Entomology Laboratory, U. S. D. A., c/o U. S. National Museum,
Washington, D. C. 20560, and Applied Scientific Research Corporation,
Bangkok, Thailand*

Wirth (1952) described *Bezzia granulosa* from Monterey County, California, pointing out that in several characters it did not fit the genus *Bezzia* Kieffer, stating: "The anterior radial cell is very long, the radius produced, and the fifth tarsal segment swollen as in *Neurohelea*; the hind tarsal claws are long and unequal, and the abdomen is marked much as in *Probezzia*." While presently undertaking a revisionary study of the genera of Ceratopogonidae, we have studied additional material of *B. granulosa* which indicates that this species must be placed in a new genus of Heteromyiini (Wirth, 1962) near *Neurohelea* Kieffer. The wing of *Neurohelea* has two radial cells, the female tarsal claws are equal on all legs, and the female abdomen is uniformly dark.

Neurobezzia Wirth and Ratanaworabhan, new genus

Type-species, *Bezzia granulosa* Wirth.

Diagnosis.—Female: Small black midges with whitish wing and bicolored legs (Fig. 1g) and abdomen. Very similar to *Neurohelea*; differing as follows: Wing (Fig. 1b) with one radial cell. Legs (Fig. 1h) with tarsal claws long and curved; equal on fore and mid legs, unequal on hind legs, shorter claw approximately three fourths as long as longer one; claws (Fig. 1e) each with small, slender, internal barb. Abdomen milky white, third and fourth segments with variable internal pigmentation; eighth segment (Fig. 1i) sclerotized, forming dark brown ring.

NEUROBEZZIA GRANULOSA (Wirth), NEW COMBINATION (Fig. 1)

Bezzia granulosa Wirth, 1952: 240 (female; California).

Type.—Holotype, female, Arroyo Seco Ranger Station, Monterey County, California, 1 July 1948, W. W. Wirth (Type no. 59964, USNM).

Distribution.—California.

New Records.—CALIFORNIA: Mono Co., Convict Creek, 7,200 ft, 17 July 1963, H. D. Kennedy, light trap, 1 female; Sardine Creek, 8,500 ft, 6 July 1951, A. T. McClay, 1 female. Tehama Co., Red Bluff, 11 May 1949, H. P. Chandler, light trap, 1 female. Trinity Co., Trinity River Camp, 17 July 1953, A. T. McClay, 2 females.

¹ Acknowledgment is gratefully made to the Southeast Asia Treaty Organization in Bangkok for financial assistance for study at the U. S. National Museum.

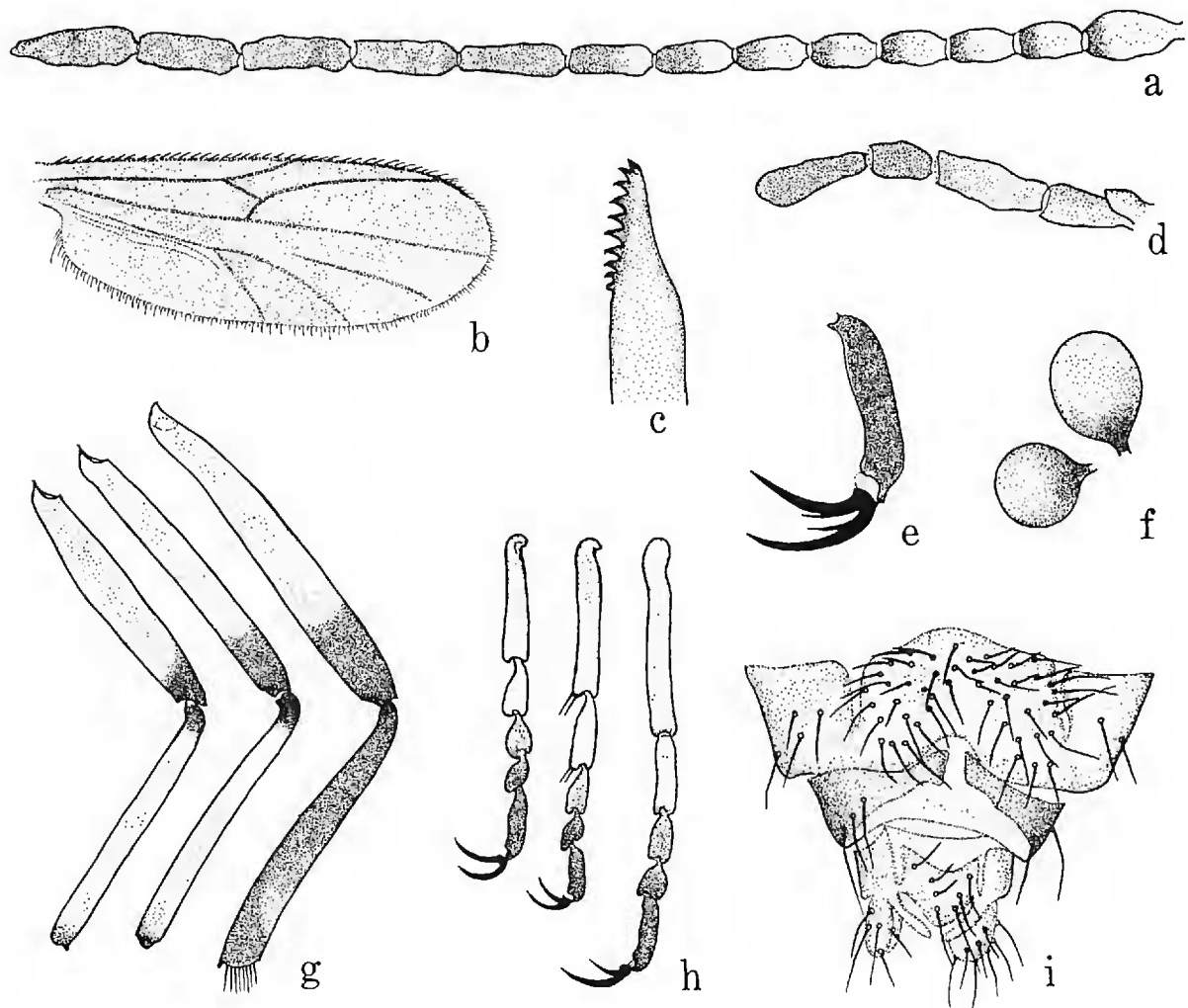


FIG. 1. *Neurobezzia granulosa*, female: a. antenna; b. wing; c. mandible; d. palpus; e, fifth tarsomere and claws of fore leg; f. spermathecae; g. femora and tibiae of fore, mid and hind legs, left to right; h. same, tarsi; i. genital sclerotization of terminal abdominal segments.

LITERATURE CITED

- WIRTH, W. W. 1952. The Heleidae of California. Univ. Calif. Publ. Entomol., 9: 95-266.
1962. A reclassification of the *Palpomyia-Bezzia-Macropeza* Groups, and a revision of the North American Sphaeromiini (Diptera, Ceratopogonidae). Ann. Entomol. Soc. Amer., 55: 272-287.